

## DC-2300: A brilliant Card Printer



### Modular Direct to Card Printers at 300 x 1200 DPI

- Space-saving modular design
- Easy to install ribbon cartridge.
- High throughput with up to 180 cards per hour
- Excellent print resolution
- Card feeder with 100 card capacity
- Multiple modes of use with optional Duplexer

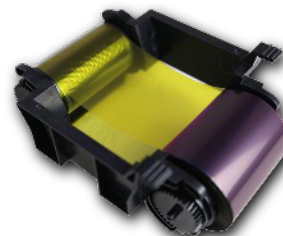


DASCOM introduces evolutionary technology with the DC-2300 series Card Printer that adapts to your business needs while helping you be more productive at a cost-effective price.

The Printer's direct to card technology generates brilliant, high resolution colors and includes DASCOM Security options with optional holographic capability for enhanced security. These security features help to mitigate compromise of your important business data and cards.

The printer's modular design allows you to print dual-sided with an optional Duplexer without compromising its small footprint size.

The DC-2300 can be used with other business card software, or as a traditional Windows Printer.



New easy to load Ribbon Cartridge

### Available configurations:

Single-Sided Model - 28.883.6183

Dual-Sided Model - 28.883.6179

## DC-2300: A brilliant Card Printer

<b>Print speed</b>	YMCKO Ribbon, single side: 180 cards per hour YMCKO Ribbon, double side: 90 cards per hour K only Ribbon, single side: 450 cards per hour
<b>Printing Capability</b>	Single Side, Edge-to-Edge, optional Dual-Sided
<b>Resolution</b>	300 dpi with possibility of 300x600 dpi and 300x1200 dpi
<b>Options</b>	Duplexer, Contact, Contactless, Mag Strip Encoding
<b>Feeder capacity</b>	100 cards 0.76 mm thick
<b>Card thickness</b>	0.25 ~ 1.25mm
<b>Printing method</b>	Dye-sublimation direct to card technology.
<b>Memory</b>	RAM: 32MB, ROM: 2MB + 4MB
<b>Processor</b>	Integrated Circuit / STMicroelectronics
<b>Graphics processor</b>	FPGA/ Lattice Semiconductor
<b>Safety features</b>	Proprietary DASCOM SOCTechnology, Custom Watermarks, RFID Encrypted Ribbons, Data Protection using K only Ribbons
<b>Terms of use</b>	15 - 35 ° C. Humidity: 20 - 65%.
<b>Storage conditions</b>	-5 - 70 ° C. Humidity: 35 - 96%.
<b>Dimensions</b>	352 cm × 199 cm × 210 cm (13,85 x 7,83 x 8,26 inches)
<b>Weight</b>	6 kg (13.2 pounds)
<b>Warranty</b>	3-years
<b>Driver</b>	Windows XP, Vista, 7, 8, 10 (32 and 64 bits)
<b>Power supply</b>	100-240 Vac input. 50/60 Hz
<b>Compatible cards</b>	PVC, ABS, PET, PET-G; 85.6 x 53.98 mm (ISO ID-1 / CR-80 size)
<b>Standard interface</b>	USB 2.0, USB host, Ethernet 10/100 Duplex mode
<b>Certifications</b>	FCC SdoC, 2014/53/EU (RED), EMC, ETL, CB + LVD, CCC
<b>Card editing software</b>	Dascom CardEditor.

### Printer Options & Consumables

<b>Color Ribbons</b>	YMCKO (500 images), YMCKOO (400), YMCKOK (400), ½YMC KO (600), K only (1650)
<b>Cleaning Set</b>	Cleaning Card, Cleaning Roller and Cleaning Swabs
<b>Options</b>	RFID R/W, SAM R/W, Mag Stripe; Duplexer (dual sided printing)

**DASCOM Americas**  
34 Lakeview Court  
Verona, Virginia, 24482 . USA.  
Tel: +1 (877) 434-1377  
www.dascomamericas.com  
info.us@dascom.com

**DASCOM Europe GmbH**  
Heuweg 3 | 89079 Ulm | GERMANY  
Tel.: +49 731 2075-0  
Fax: +49 731 2075-100  
info@dascom.com  
www.dascomeurope.de

**DASCOM (Holdings) LTD**  
R. 1811-1816A | Nan Fung Centre.  
264-298 Castle Peak Road. Tuen Wan,  
N. T. | Hong Kong  
Tel.: +852 2498 1507  
Fax: +852 2413 6047

